

REPORT TO: Health & Wellbeing Board

DATE: 27th July 2020

REPORTING OFFICER: Director of Public Health

PORTFOLIO: Health and Wellbeing

SUBJECT: Overview of Covid-19 in Halton including the Health Protection Board and the local Covid-19 Outbreak Hub and the Cheshire & Merseyside Outbreak Hub

WARD(S) Borough-wide

1.0 PURPOSE OF THE REPORT

1.1 To provide the Board with a briefing of Halton's position on Complex Outbreak Management and the associated Local Outbreak Management Plan Refresh and receive feedback from members of the Board.

2.0 RECOMMENDATION: That the Board

Receive a briefing of Halton's Local Outbreak Management Plan Refresh 2021 and provide feedback on the plan to the Director of Public Health.

3.0 SUPPORTING INFORMATION

3.1 On the 22nd of May 2020 the Government requested individual Covid-19 Outbreak Plans for complex settings be developed by all councils with funding to be provided; the deadline for these was 30th June. These have now been refreshed and are out for consultation with partners. Local Authorities have also been asked to complete a template which outlines their analysis of the current situation including what works well and where there are challenges.

3.2 What is a complex setting?

A complex setting is a setting outside of the health sector and includes:

- a) Complex and high risk settings such as care homes and schools,
- b) Complex cohorts such as those who are rough sleepers, faith communities, asylum seekers,
- c) Complex individuals and households including our defined vulnerable and shielded cohorts Mental Illness; Victims of Domestic Abuse; complex social-economic circumstances.

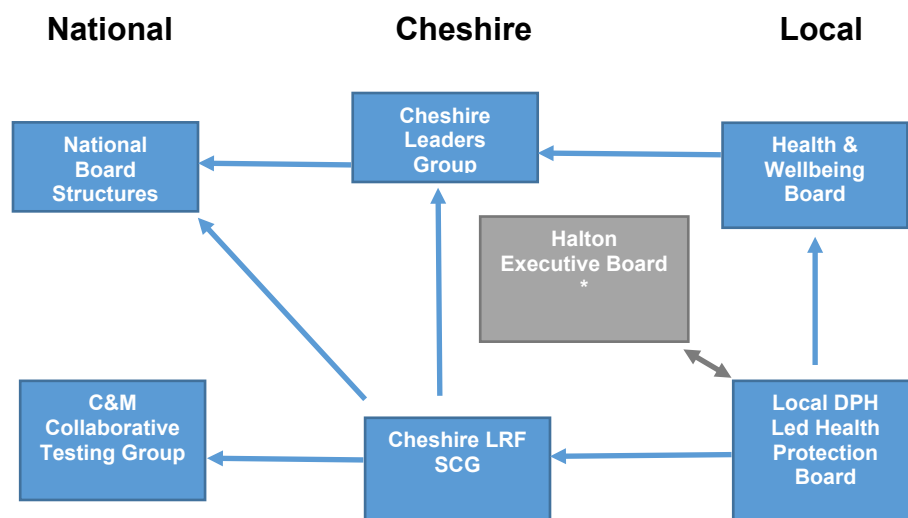
3.3 Governance of Outbreaks.

Outbreaks in Halton is overseen by a Local Outbreak Board which is responsible for communication and engagement with the public and overseeing of any lockdowns that may be required.

The Outbreak Board is responsible to the Health and Wellbeing Board.

The Outbreak Board is supported by the Health Protection Board which includes all necessary expertise to advise on outbreak management and is chaired by the Director of Public Health.

Framework for Governance across Cheshire



*Decision making authority

3.4 Halton Outbreak Plan 2021

Halton has refreshed its **Local Outbreak Management Plans** on high risk groups and complex settings. They include how we identify and address inequalities, compliance and enforcement, local governance, resource and capacity management, communications and data and intelligence. They also incorporate national and local developments in testing, tracing, containment and engagement. In addition they anticipate the changing nature of C19 in terms of the development of new variants of concern (VOCs) and the need for surge capacity and the move from a pandemic to endemic response.

We recognise the need to work as a whole system to address C19 so in tandem with the national Roadmap we have developed a comprehensive **Halton Roadmap** including all services within the Council to support recovery out of lock down and beyond. This sits beside our Local Outbreak Management Plan.

Halton was part of the recent PHE and Local Authorities Senior Leaders **Cheshire & Warrington and Liverpool City Region Workshops for Roadmap and Recovery**.

The latter considered enduring transmission and frequent outbreaks, BAU and dealing with the dominant variant and sporadic outbreaks and VOCs. We shared what we can do together as local authorities, standardisation of procedures, joint contact tracing hubs, mutual aid, cross border working, protecting our vulnerable populations and health inequalities as well as supporting and re-opening the economy.

Cheshire and Mersey have developed the **CIPHA** (Combined Intelligence for Population Health Action) data lake which gives us timely access to C19 data on infections, outbreaks, geographic locations, common exposure areas and vaccinations and allows us to be responsive and agile. This plays into our local intelligence teams and the Cheshire and Merseyside Intelligence Cells. It has also allowed us to jointly identify areas of concern, such as workplaces, and make recommendations to the national team.

In addition we have a **Cheshire and Mersey Contact Tracing and Outbreak Support Hub** which we would like to maintain in our move into an endemic situation. We developed this Hub jointly with PHE and it brings together Public Health Consultants, call handlers, environmental health officers etc and links into and supports our local Halton Contact Tracing and Outbreak Hub. Given the development of VOCs and the move towards Zero Hours Contact Tracing and Enhanced Contact Tracing we see resource for this Hub as crucial for surge capacity.

Halton is part of the **Liverpool City Region SMART Testing Pilot** and has a comprehensive Community Testing Programme. We would anticipate as testing continues to morph to suit population requirements for changing C19 requirements that we keep the capacity for surge testing and Pop Ups for complex cases and outbreaks. Halton has benefitted from the **in-depth research Under The Skin** just undertaken by Cheshire & Merseyside CHAMPS and our Health Care Partnership to look at vaccine hesitancy by Minority and Ethnic Groups and how to promote uptake and tailor communications.

4.0 POLICY IMPLICATIONS

4.1 Halton is in line with Government requirements to address COVID 19.

5.0 OTHER/FINANCIAL IMPLICATIONS

5.1 There is ring fenced allocated funding for outbreak planning and staff.

6.0 IMPLICATIONS FOR THE COUNCIL'S PRIORITIES

6.1 Children & Young People in Halton

These plans will protect the health of children and young people in Halton.

6.2 Employment, Learning & Skills in Halton

N/A.

6.3 A Healthy Halton

These plans will protect the health of people in Halton.

6.4 **A Safer Halton**

These plans will protect the safety of people in Halton.

6.5 **Halton's Urban Renewal**

N/A.

7.0 **RISK ANALYSIS**

7.1 These plans will reduce the risk to local people from an outbreak.

8.0 **EQUALITY AND DIVERSITY ISSUES**

8.1 There are no equality or diversity issues resulting from this report.

9.0 **LIST OF BACKGROUND PAPERS UNDER SECTION 100D OF THE LOCAL GOVERNMENT ACT 1972**

9.1 Halton Outbreak Management Plans 2021.